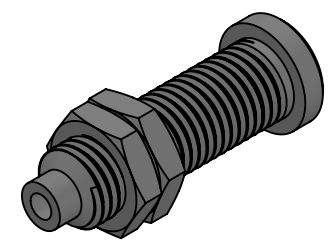
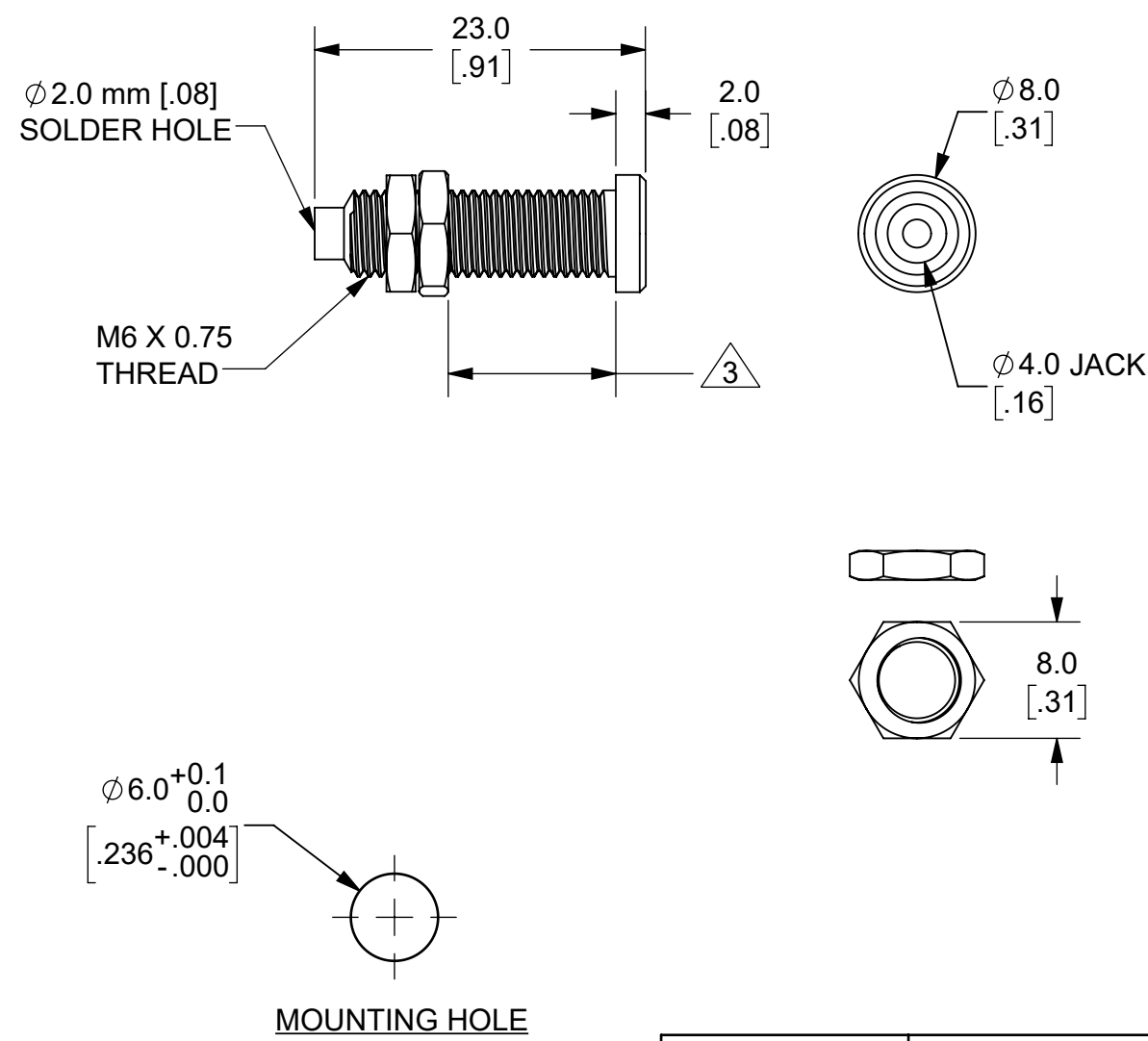


THIS IS ISSUED IN STRICT CONFIDENCE THAT IT IS NOT USED AS A BASIS FOR MANUFACTURE OR SALE AND THAT IT IS NOT COPIED, REPRINTED OR DISCLOSED TO A THIRD PARTY EITHER WHOLLY OR IN PART WITHOUT THE PRIOR WRITTEN CONSENT OF CAL TEST ELECTRONICS, INC.


NOTES:

1. MATERIAL:
BODY: BRASS, Ni PLATED
HEX NUT: STEEL, Zn PLATED OR BRASS, Ni PLATED.
2. RATING:
CURRENT 36 A MAX
TEMPERATURE: -20° TO 150° C.
3. MAXIMUM PANEL THICKNESS: 12.7 [0.50]
4. PACKAGING:
PRICE INDIVIDUAL, 50 PCS PER BAG.
5. WEIGHT: 3.40 g/pc.



ISOMETRIC VIEW

| REVISIONS | | | |
|-----------|---|-----------|-----------|
| REV. | DESCRIPTION | DATE | APPROVED |
| A | CLASS A RELEASED | 7/12/1999 | B. HANSEN |
| B | UPDATED TO METRIC FORMAT; ADDED NOTE 6 | 6/4/2018 | B.HANSEN |
| C | UPDATED TO LATEST CAL TEST DRAWING FORMAT; CHANGED DRAWING NO. FROM P222000 TO CT2220 | 2/21/2022 | B. HANSEN |

| | | | | | | | | | | | |
|---|--|----------------------|--|-------------------|--|---|--|--|--|-----------|--|
| CT2220 | | NICKEL PLATED BRASS | | - | | | | | | | |
| PART NUMBER | | CONFIGURATION | | NOTES / REFERENCE | | | | | | | |
| PART NUMBER TABLE | | | | | | | | | | | |
| UNLESS OTHERWISE SPECIFIED DIMENSIONS ARE IN MILLIMETERS TOLERANCES ARE: X.X = ±0.5 X.X° = ±0.5° X.XX = ±0.25 X.XXX = ±0.125 DO NOT SCALE DRAWING | | PROJECT NO. | | METRIC | | Cal Test ELECTRONICS  | | 22820 Savi Ranch Prky. Yorba Linda, CA 92887 USA | | | |
| | | APPROVALS | | DATE | | TITLE 4mm JACK UNINSULATED, PANEL MOUNT w/2mm SOLDER HOLE | | | | | |
| | | DRAWN G.S.G. | | 2/21/2022 | | | | | | | |
| | | CHECKER B. HANSEN | | 2/21/2022 | | | | | | | |
| | | ENGR. B. HANSEN | | 2/21/2022 | | | | | | | |
| MATERIAL SEE NOTES | | DESIGN ACTIVITY | | SIZE B | | CAGE CODE 43F45 | | DWG. NO. CT2220 | | REV. C | |
| TREATMENT N/A | | | | SCALE 2:1 | | SHEET 1 OF 1 | | | | | |
| FINISH SEE NOTES | | | | | | | | | | | |