

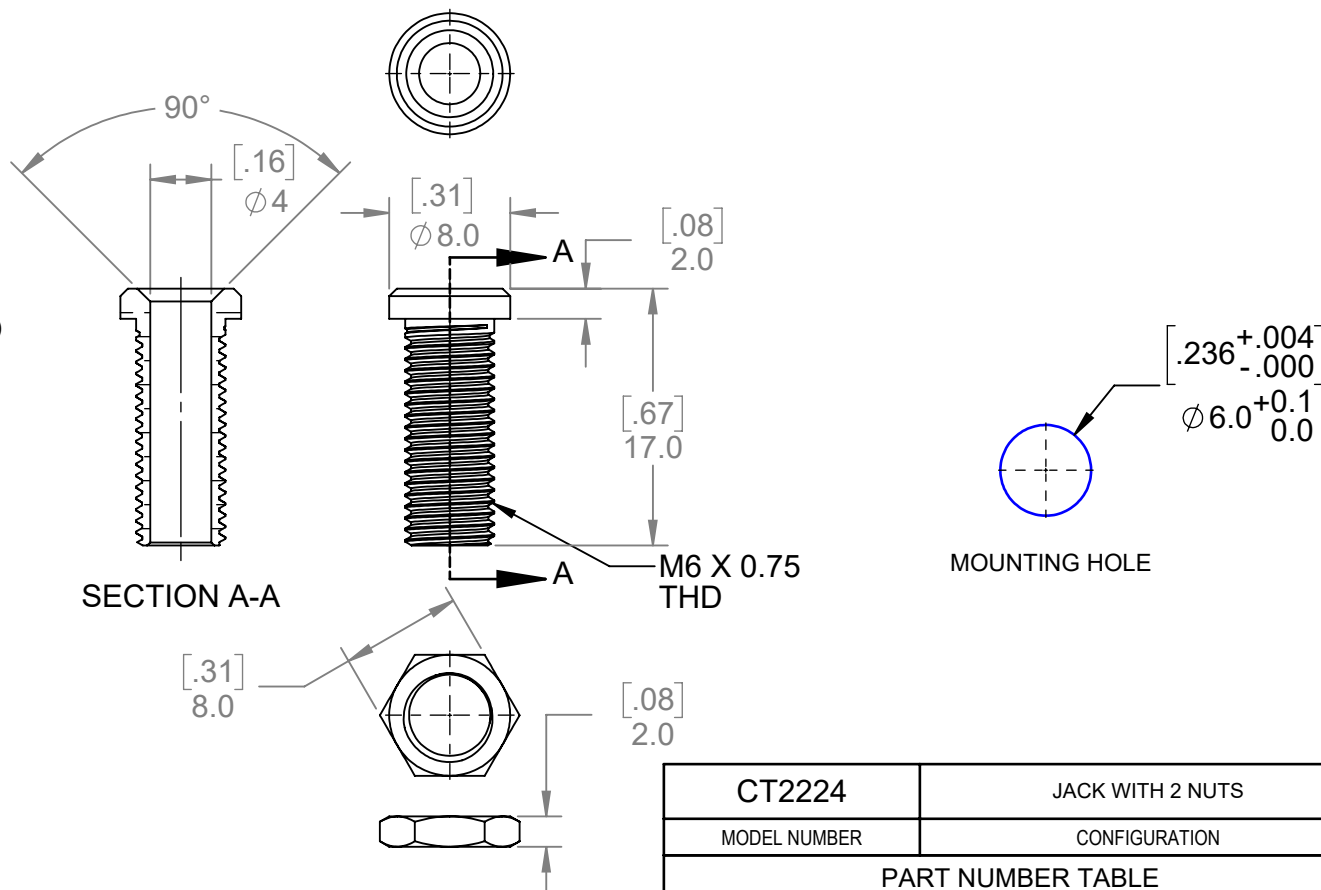
THIS IS ISSUED IN STRICT CONFIDENCE
THAT IT IS NOT USED AS A BASIS FOR
MANUFACTURE OR SALE AND THAT IT IS
NOT COPIED, REPRINTED OR
DISCLOSED TO A THIRD PARTY EITHER
WHOLLY OR IN PART WITHOUT THE
PRIOR WRITTEN CONSENT OF CAL TEST
ELECTRONICS, INC.

NOTES:

1. MATERIAL:
BODY & NUTS: BRASS, NICKEL PLATED.
2. SPECIFICATIONS:
CURRENT: 36 A MAX.
TEMPERATURE: -20°C TO +150°C
3. SUPPLIED WITH 2 HEX NUTS. MODEL CT3156.
4. MOUNTING HOLE: REFERENCE DIAGRAM.
5. MAXIMUM PANEL THICKNESS: 12.7 mm (0.50).
6. RoHS 2 COMPLIANT; EXEMPTION ANNEX III 6(c)
7. WEIGHT:
INDIVIDUAL: 2.9 g/pc



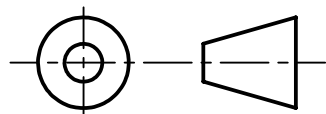
ISOMETRIC VIEW
SCALE 1:1



CT2224	JACK WITH 2 NUTS
MODEL NUMBER	CONFIGURATION
PART NUMBER TABLE	

METRIC

THIRD ANGLE PROJECTION



UNLESS OTHERWISE
SPECIFIED DIMENSIONS
ARE IN MILLIMETERS
TOLERANCES ARE:
PER DIN ISO 2768m

DO NOT SCALE DRAWING

MATERIAL
SEE NOTES

TREATMENT
n/a

FINISH
SEE NOTES

PROJECT NO.

N/A

APPROVALS

DATE

DRAWN
WDH

5/29/2019

CHECKER
B.Hansen

6/6/2019

ENGR.

DESIGN ACTIVITY

Cal Test Electronics

22820 Savi Ranch Parkway
Yorba Linda, CA 92887

TITLE

**4 mm BANANA JACK, UN-INSULATED,
THRU-HOLE**

SIZE

A

CAGE CODE

43F45

DWG. NO.

P222400

REV.

B

SCALE 2:1

SHEET 1 OF 1