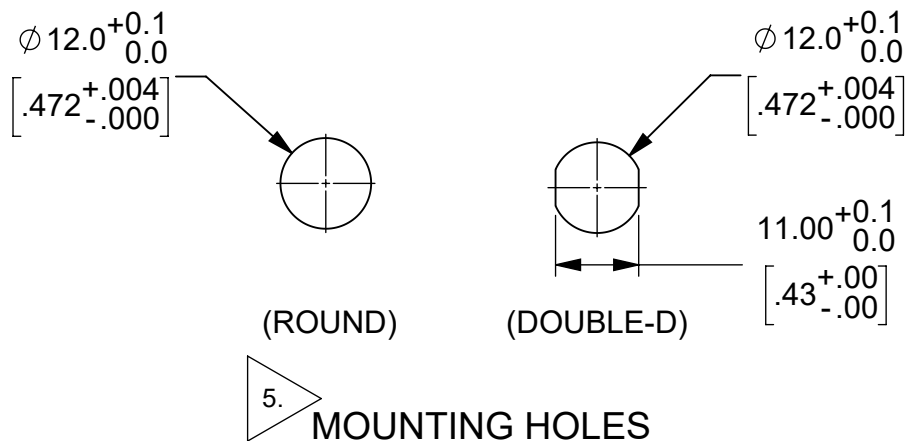


THIS IS ISSUED IN STRICT CONFIDENCE THAT IT IS NOT USED AS A BASIS FOR MANUFACTURE OR SALE AND THAT IT IS NOT COPIED, REPRINTED OR DISCLOSED TO A THIRD PARTY EITHER WHOLLY OR IN PART WITHOUT THE PRIOR WRITTEN CONSENT OF CAL TEST ELECTRONICS, INC.

NOTES:

1. 4mm SHEATHED (SAFETY) JACK, PANEL MOUNT.
2. ACCEPTS 4mm SHEATHED BANANA PLUGS PER IEC 61010-031 ANNEX E.
3. SPECIFICATIONS:
 1. INSULATOR: POLYAMIDE PA66 (NYLON):
 1. BASF ULTRAMID, A3K RO1, V-2, UL QMFZ2.
 2. -DELETED-
 2. CONTACT: BRASS, COPPER ALLOY C36000 OR JIS 3604, 1/2H, NICKEL PLATED, 1-3 MICROMETERS.
4. RATING:
 1. VOLTAGE: 1,000 V CAT III, P2
 2. CURRENT: DEPENDANT ON TERMINAL CONFIGURATION:
 1. 01, 02, 05 THRU 08: 36 A MAX.
 2. 03, 04: 25 A MAX.
 3. RESISTANCE: <0.5mΩ
 4. TEMPERATURE: -20°C TO +65°C MAX.
 5. STORAGE TEMPERATURE: -20°C TO +80°C.
5. MOUNTING HOLES: EITHER ROUND OR DOUBLE-D DEPENDING ON AVAILABLE TOOLING.
6. NOT ALL COLORS WILL BE AVAILBLE AS STANDARD. PLEASE REVIEW CTE WEBSITE.
7. MAXIMUM PANEL THICKNESS: 10 mm (0.4").
8. SUPPLIED WITH ROUND PANEL NUT CT2830. MAX TORQUE 1.0 Nm (8.8 in-lb / 0.74 ft-lb).
9. RECOMMENDED ASSEMBLY TOOL, CT2246.
10. -DELETED-
11. MODELS ARE RoHS 2+ COMPLIANT.
12. STANDARDS: UL 61010-1 EDITION 3, REVISION DATE 06/06/2023; UL 61010-2-030 EDITION 2, REVISION DATE 05/24/2023; CAN/CSA-C22.2 NO. 61010-1-12, EDITION 3, REVISION DATE 06/2023; AND CSA C22.2 NO 61010-2-030, EDITION 2, ISSUE DATE 121/2018.
13. CONTACT/TERMINAL RETENTION FORCE, 75 N OR 7.7 Kg [17 LBF] MINIMUM.



(NOTES CONT.):

14. PRODUCTS CONFIGURATIONS 02 AND 08, QUICK-CONNECT BLADES 90° TO INSULATOR BODY'S DOUBLE-D MOUNTING FLATS. SEE SHEET 3 OF 3.
15. MODEL CT4397-XX-#, UL RECOGNIZED COMPONENT:
 1. FILE NUMBER: E315929
 1. PICQ2, UL 61010-1:2023
 2. PICQ8, CSA C22.2 NO. 61010-1-12:2023.
16. STANDARD PACKAGING:
 1. 50 PCS PER POLYBAG WITH PANEL NUTS UNASSEMBLED (SEPARATELY POLYBAGGED IN WITH JACKS).
 2. FOR CONFIGURATION 01, M4 THD STUD, HEX NUTS, PCS, 2 PER JACK (BULKED POLYBAGGED, 100 PCS, IN WITH JACKS).

REVISIONS			
REV.	DESCRIPTION	DATE	APPROVED
A	INITIAL PRODUCT RELEASE	11/16/2023	B. HANSEN
B	ADDED NOTE 13. CONTACT RETENTION SPECIFICATION; REVISED NOTE 12. STANDARDS, IEC 61010-031 REMOVED.	1/17/2024	B. HANSEN
C	CORRECTIONS: NOTE 3, SPECIFICATIONS, DELETED MATERIAL TEKNOR APEX CHEMLON 104 H, HB.; NOTE 4, RATING, WAS 04, 05: 25 A MAX.	4/23/2024	B. HANSEN
D	REVISED NOTE 12, WAS ...UL 61010-1 EDITION 3, (2010-06)+AMD1 (2016-12)' CSA-C22 NO. 61010 EDITION 3; IEC 61010-2-030 EDITION 3 (2023); ADDED NOTE 14 AND 15, ORIENTATION OF QUICK-CONNECT CONTACT/TERMINAL AND PRODUCT UL RECOGNIZED COMPONENT.	8/8/2024	B. HANSEN
E	REVISED NOTE 13, RETENTION FORCE WAS 310 N [70 LBF]	10/15/2024	B. HANSEN
F	NOTATION CORRECTION, SHEET 3 OF 3, WAS M4X0.5; ADDED NOTE 16, STANDARD PACKAGING.	11/5/2024	B. HANSEN
G	REVISED NOTE 4, ADDED STORAGE TEMPERATURE.	5/6/2025	B. HANSEN
H	REVISED NOTE 8, MAX TORQUE WAS 2.3 NM (1.7 FT-LB); REVISED NOTE 3.2, ADDED ... OR JIS 3604; DELETED NOTE 10, INFORMATION IN NOTE 15; CORRECTED THREAD PITCH FOR CONFIGURATION -01, WAS M4X0.5.	12/10/2025	B. HANSEN

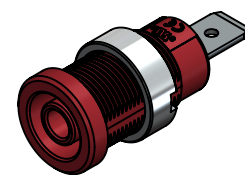
MODEL NUMBER
CT4397 - XX - #

CONFIGURATION:

- 01 - M4x0.7 THREADED STUD
- 02 - 6.4 mm (.25") QUICK-CONNECT
- 03 - 2 mm (.080") SOLDER HOLE
- 04 - 2 mm (.080") SOLDER HOLE / SLOT
- 05 - 1.9 mm x 12 mm SHORT PIN
- 06 - 1.9 mm x 21 mm LONG PIN
- 07 - M3 THREADED HOLE
- 08 - 4.8 mm (.188") QUICK-CONNECT

COLOR:

- 0 - BLACK
- 1 - BROWN
- 2 - RED
- 3 - ORANGE
- 4 - YELLOW
- 4 - GREEN
- 6 - BLUE
- 7 - VIOLET (PURPLE)
- 8 - GREY
- 9 - WHITE



ISOMETRIC VIEW
SCALE 1:1

THIRD ANGLE PROJECTION 	UNLESS OTHERWISE SPECIFIED DIMENSIONS ARE IN MILLIMETERS TOLERANCES ARE: X.X = ±0.5 X.X* = ±0.5* X.XX = ±0.25 X.XXX = ±0.125 DO NOT SCALE DRAWING	PROJECT NO. C349	METRIC <i>Cal Test</i> ELECTRONICS 22820 Savi Ranch Prky. Yorba Linda, CA 92887 USA
		APPROVALS	
REFERENCE	TREATMENT NONE	ENGR. B. HANSEN 4/12/2022	TITLE 4mm SHEATHED JACK, PANEL MOUNT, ULR
	FINISH SEE NOTES	DESIGN ACTIVITY ENGINEERING	SIZE B
			CAGE CODE 43F45
			DWG. NO. CT4397
			SCALE 1:1
			REV. H
			SHEET 1 OF 3

4

3

2

1

D

D

C

C

B

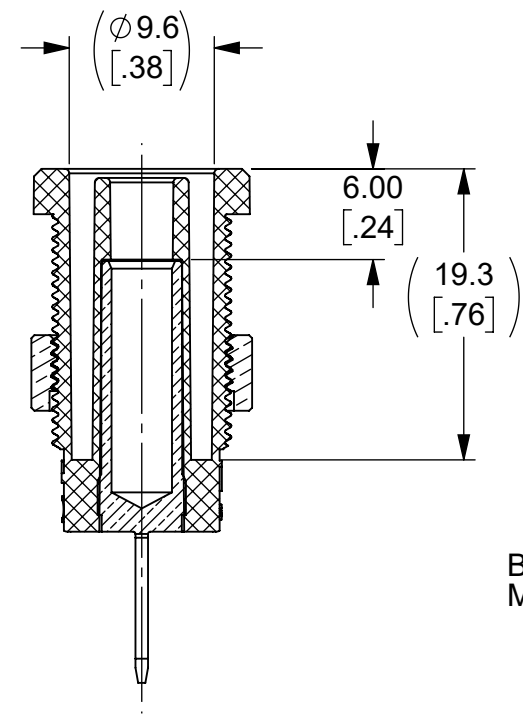
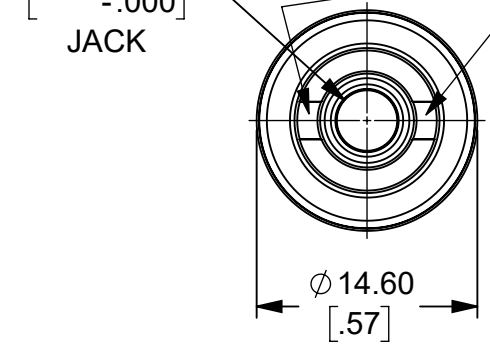
B

A

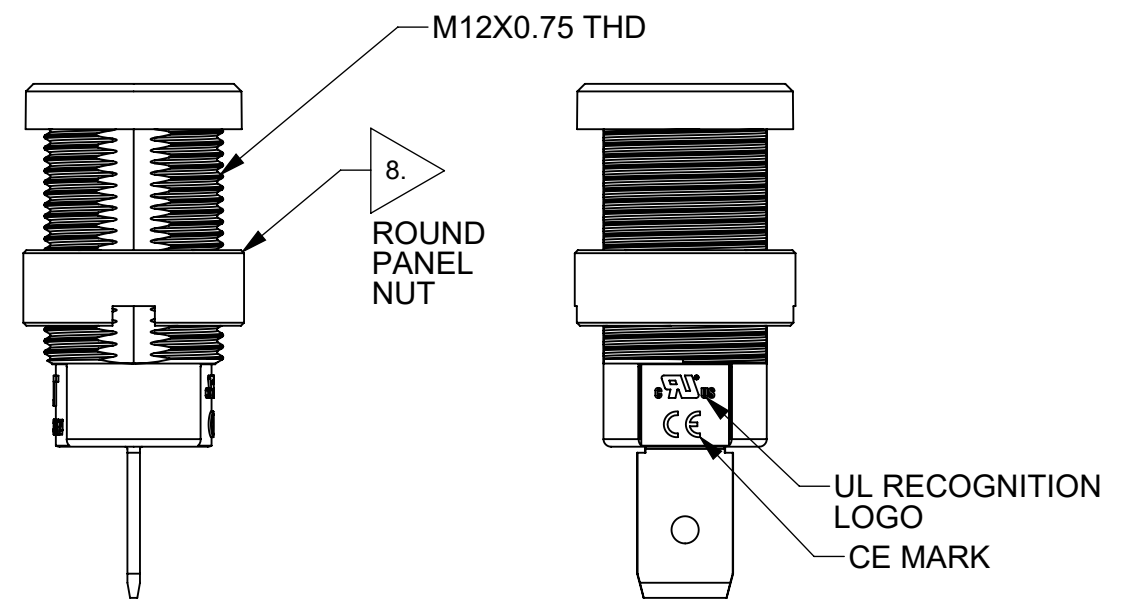
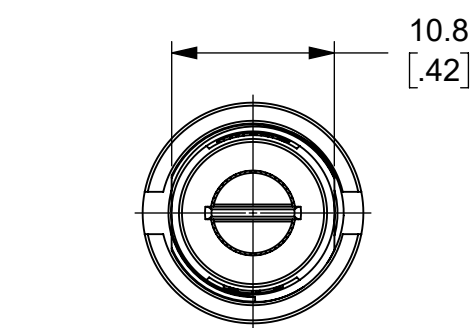
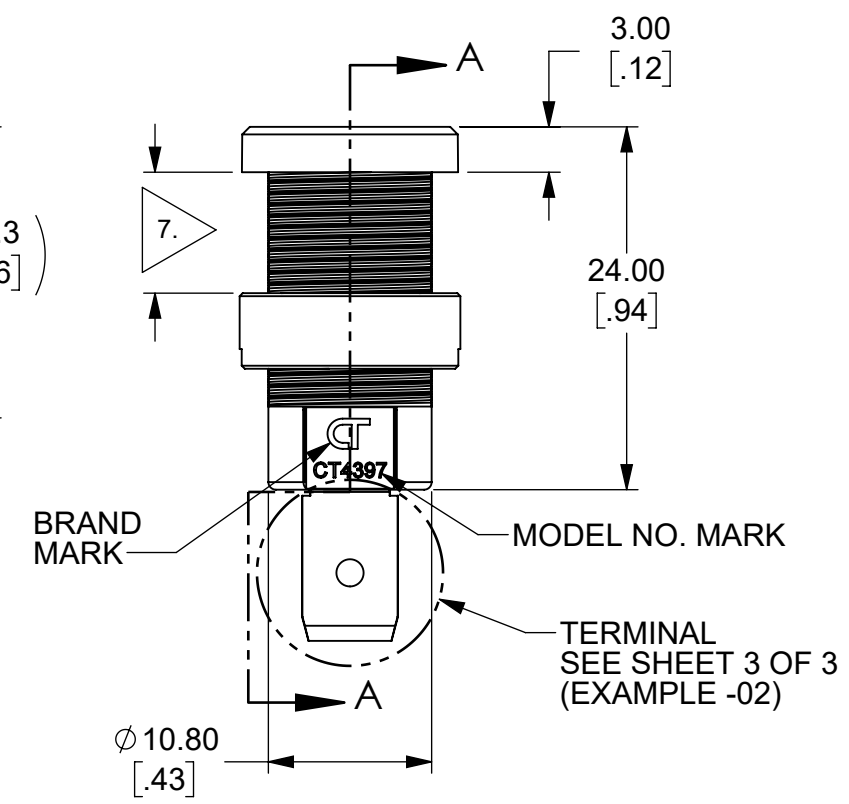
A

$\phi 4.00^{+0.05}_{0.00}$
 $[\ .157^{+.002}_{-.000}]$
 JACK

9. ASSEMBLY TOOL INTERNAL LOCKING DETENTS



SECTION A-A



METRIC	APPROVALS	DATE	SIZE	CAGE CODE	DWG. NO.	REV.
	DRAWN WDH	11/8/2023	B	43F45	CT4397	H
	CHECKER GG	4/23/2024	SCALE 2:1	SHEET 2 OF 3		

4

3

2

1

4

3

2

1

TERMINAL CONFIGURATIONS

D

D

-01
M4x0.7 THREADED
STUD

-02
6.4 mm (.25")
QUICK-CONNECT

-03
2 mm (.080")
SOLDER HOLE

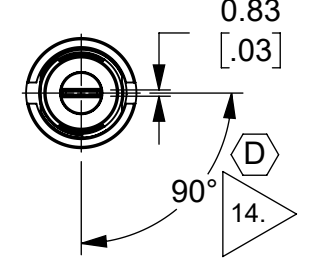
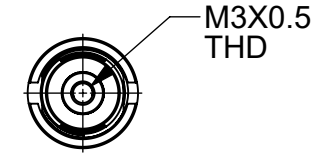
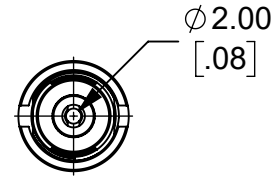
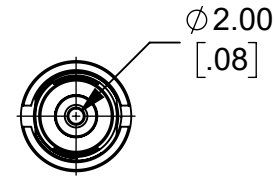
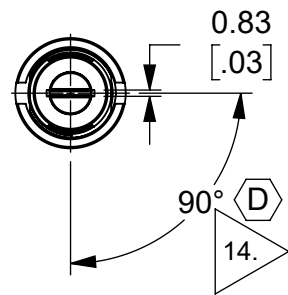
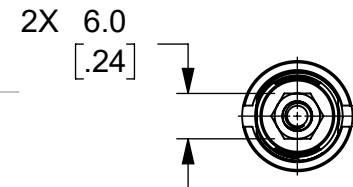
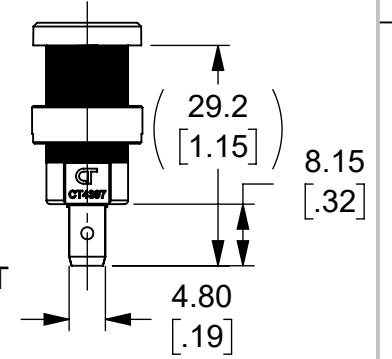
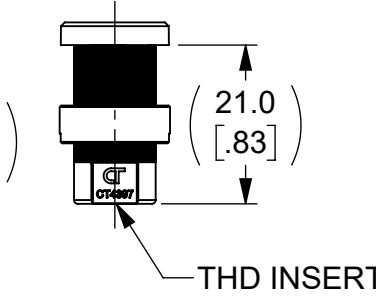
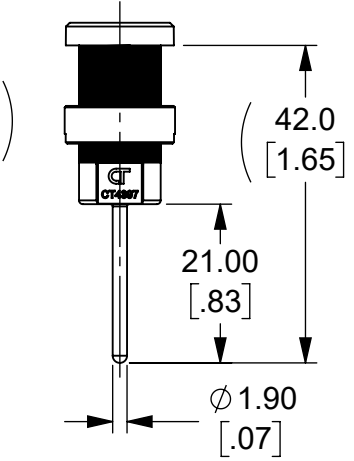
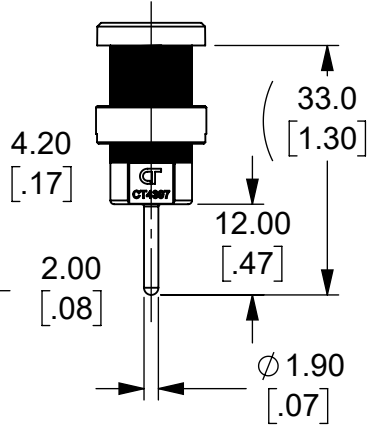
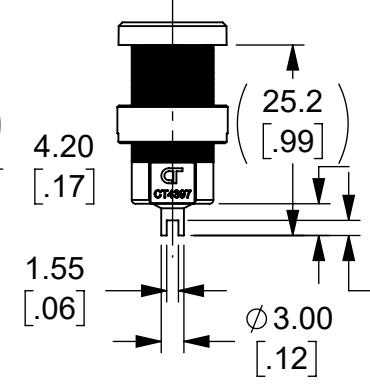
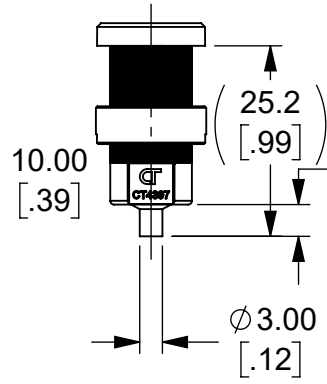
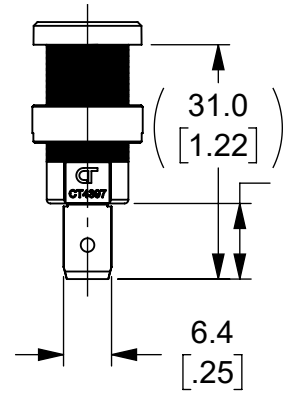
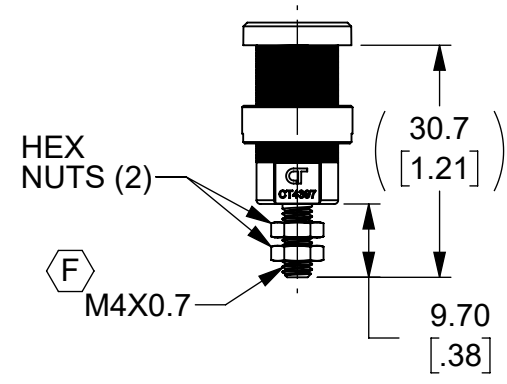
-04
2 mm (.080")
SOLDER HOLE / SLOT

-05
1.9 mm x 12 mm
SHORT PIN

-06
1.9 mm x 21 mm
LONG PIN

-07
M3 THREADED
HOLE

-08
4.8 mm (.188")
QUICK-CONNECT



C

C

B

B

A

A

4

3

2

1

METRIC

APPROVALS	DATE	SIZE	CAGE CODE	DWG. NO.	REV.
DRAWN WDH	11/8/2023	B	43F45	CT4397	H
CHECKER GG	4/23/2024	SCALE 1:1	SHEET 3 OF 3		